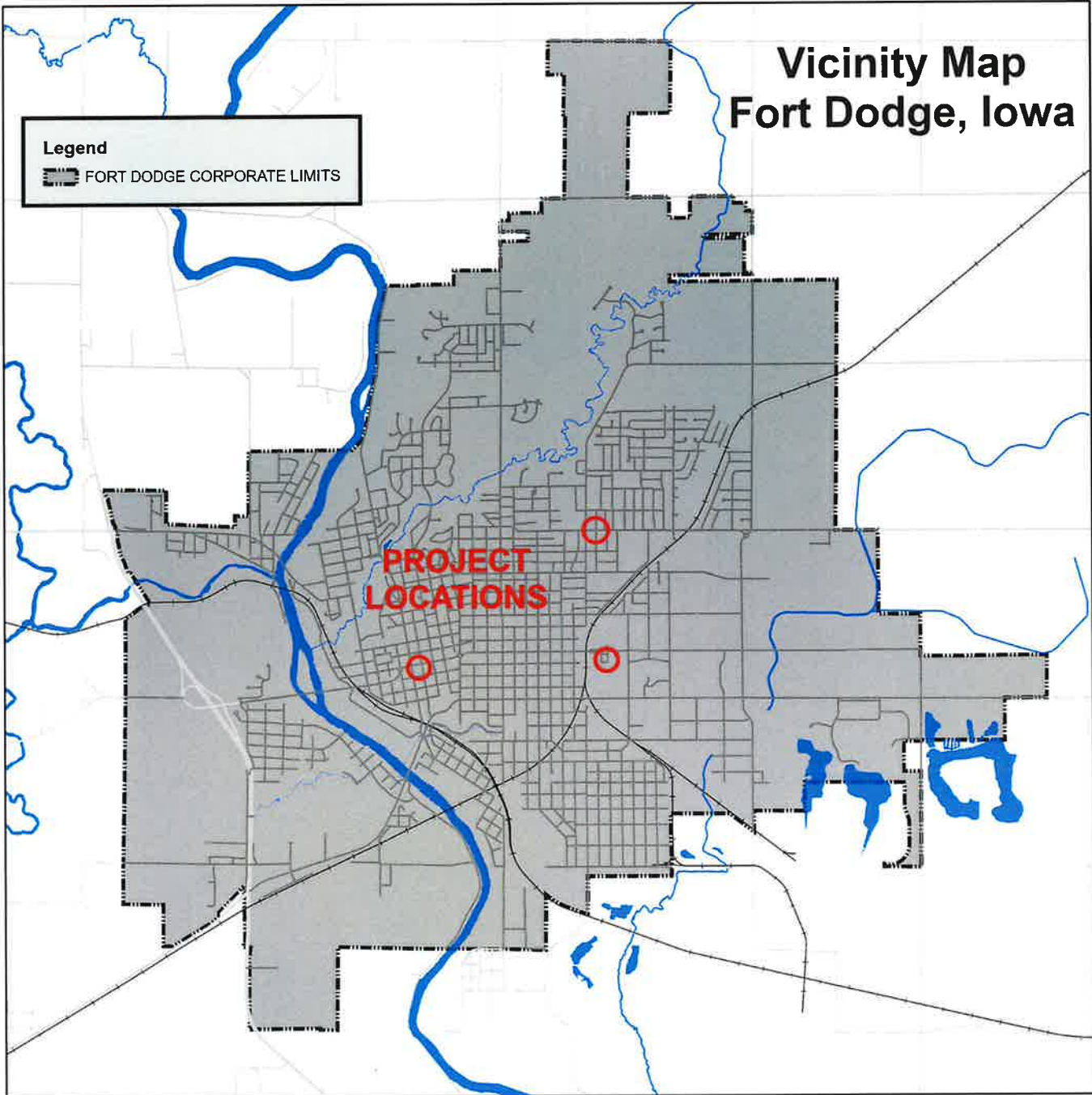


# 2026 PCC PATCH PROJECT

## FORT DODGE, IOWA

The Iowa Statewide Urban Design and Specifications (SUDAS)  
shall apply to construction work on this project.  
([www.iowasudas.org](http://www.iowasudas.org))



### INDEX OF DRAWINGS

- A.1 - TITLE SHEET
- B.1 - ESTIMATED REFERENCE INFORMATION  
ESTIMATED PROJECT QUANTITIES  
GENERAL NOTES
- C.1-C.3 - DETAILS
- D.1-D.3 - PAVING PLAN SHEETS

CITY OF FORT DODGE	
MAYOR:	DAVID FLATTERY
COUNCIL:	KIM ALSTOTT JEN CRIMMINS SCOTT DAVIS TODD MCCUBBIN TERRY MOEHNKE CAMERON NELSON MEGAN SECOR
FINANCE DIRECTOR:	JEFF NEMMERS
CHIEF DEVELOPMENT OFFICER:	CHAD SCHAEFFER, P.E.
CITY ENGINEER:	AUSTIN T. MORROW, P.E.

	I HEREBY CERTIFY THAT THIS ENGINEERING DOCUMENT WAS PREPARED BY ME OR UNDER MY DIRECT PERSONAL SUPERVISION AND THAT I AM A DULY LICENSED PROFESSIONAL ENGINEER UNDER THE LAWS OF THE STATE OF IOWA.	
	SIGNATURE: <u>Austin Morrow</u>	DATE: <u>1/26/2026</u>
	MY LICENSE RENEWAL DATE IS DECEMBER 31, <u>2027</u>	
	PAGES OR SHEETS COVERED BY THIS SEAL: <u>All Pages (1-8)</u>	

Designed	Drawn	Checked	Austin Morrow PE
2026 PCC PATCH PROJECT			
City of Fort Dodge Engineering Department			
819 1ST AVE S			
FORT DODGE, IA			
Approved		Title	
Date		Date	

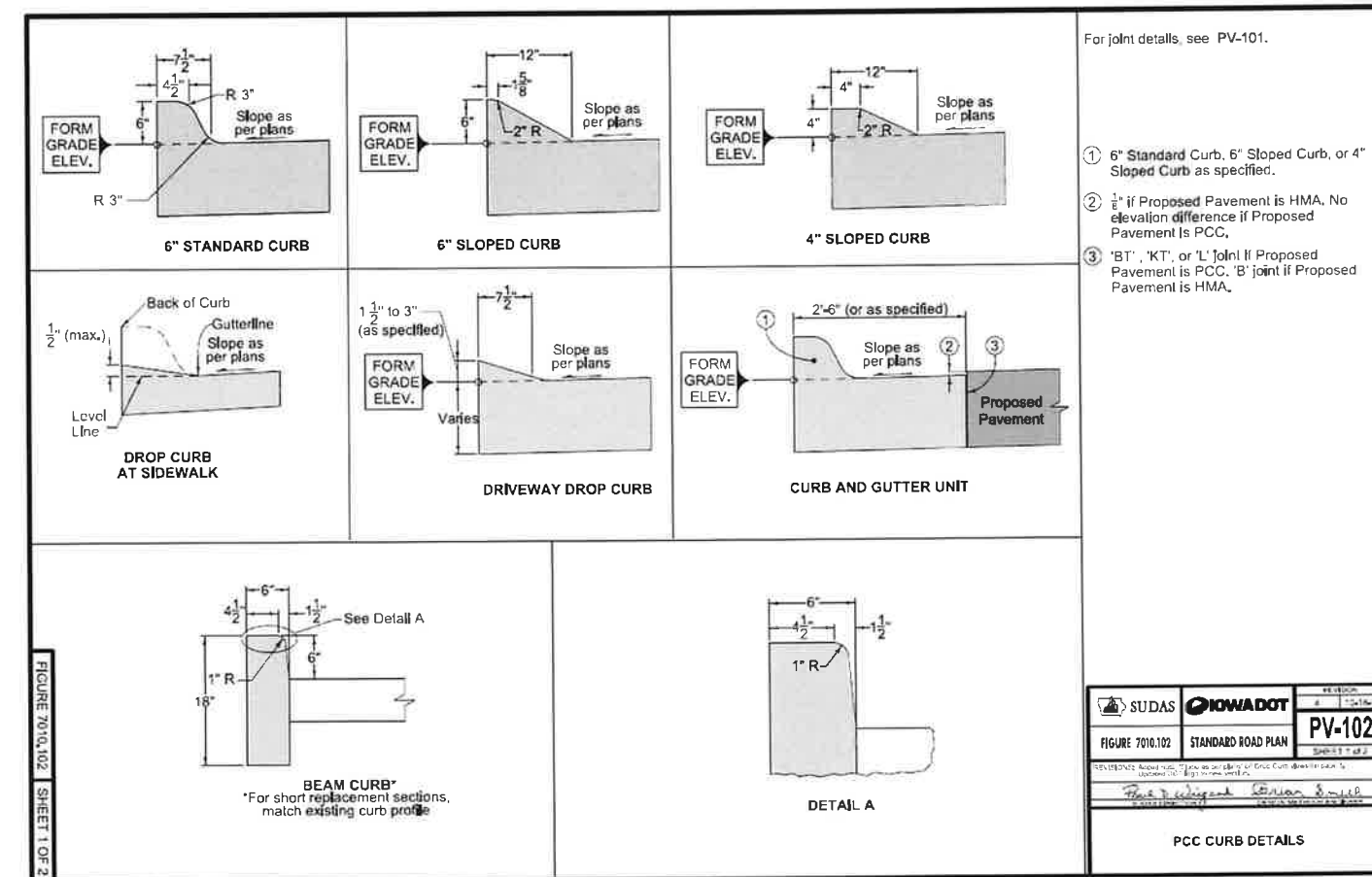
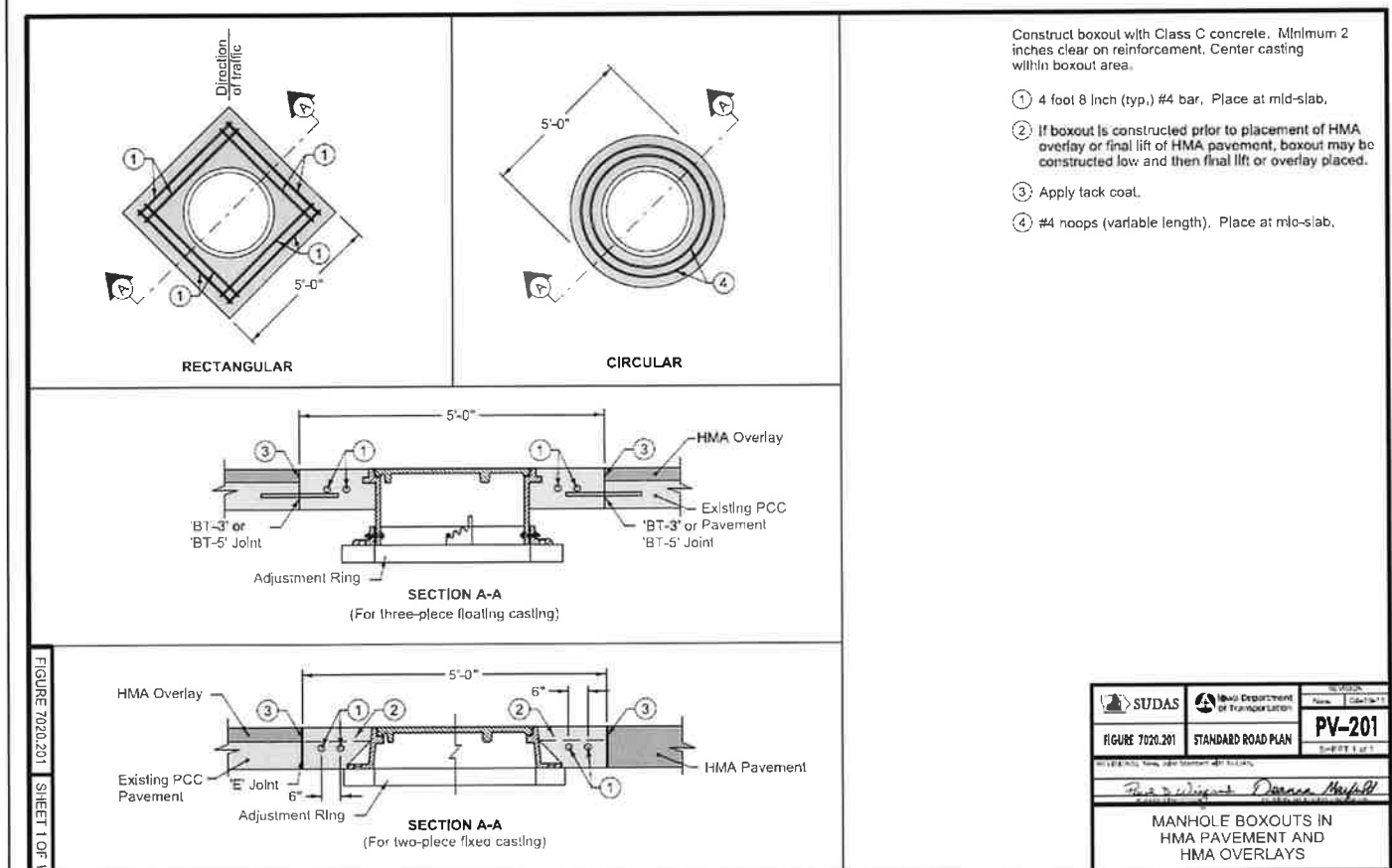
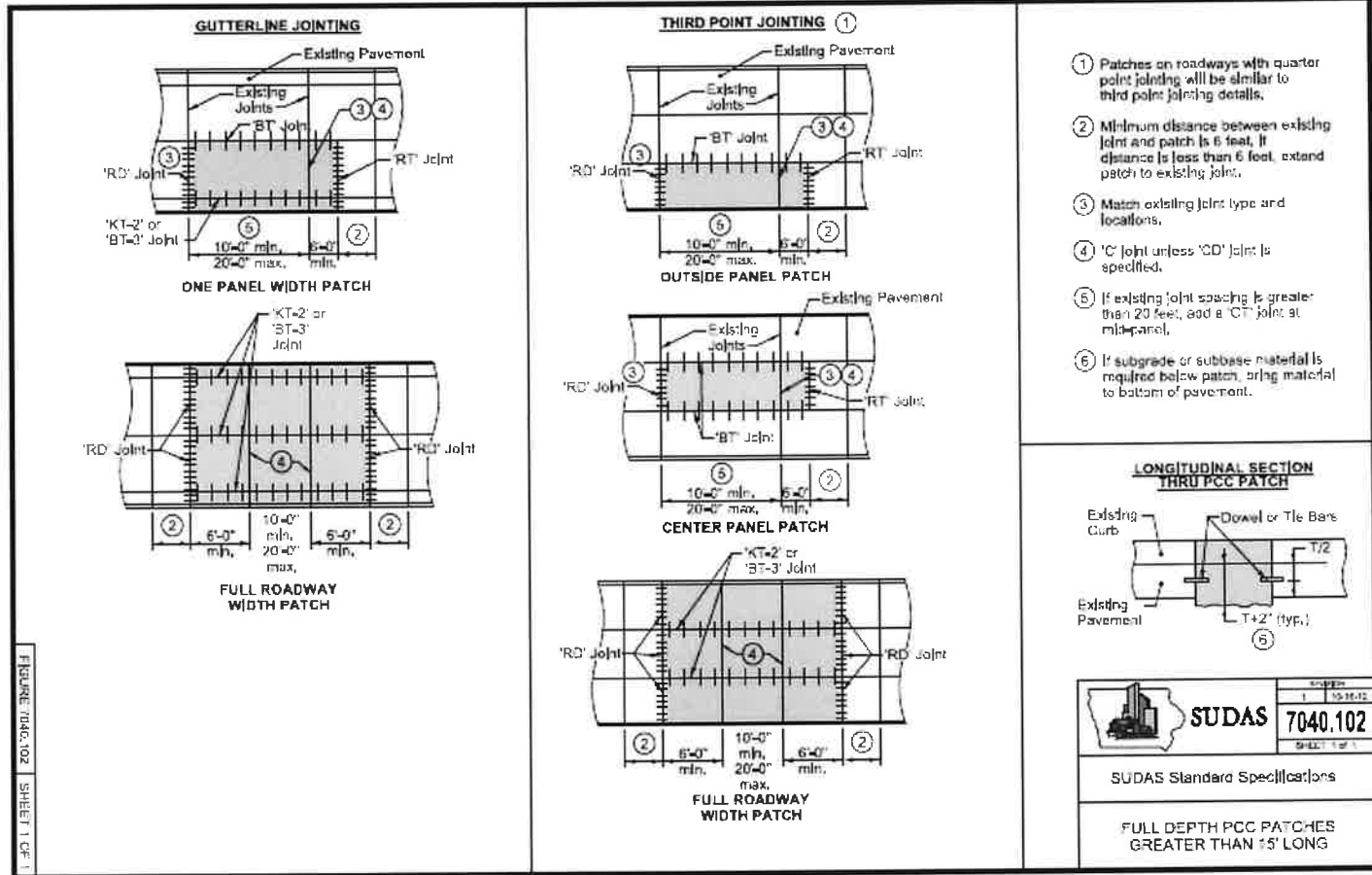
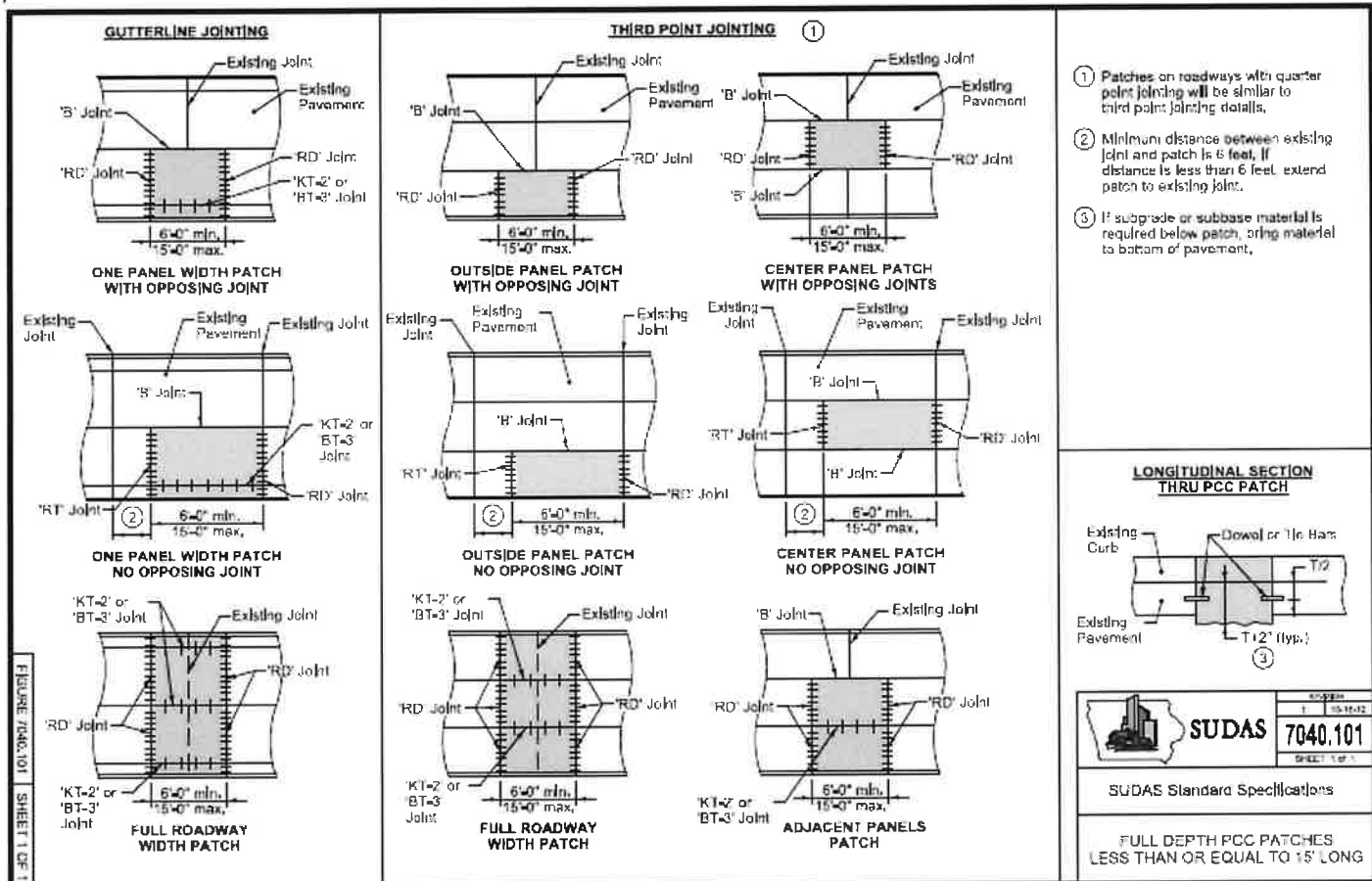
### GENERAL NOTES

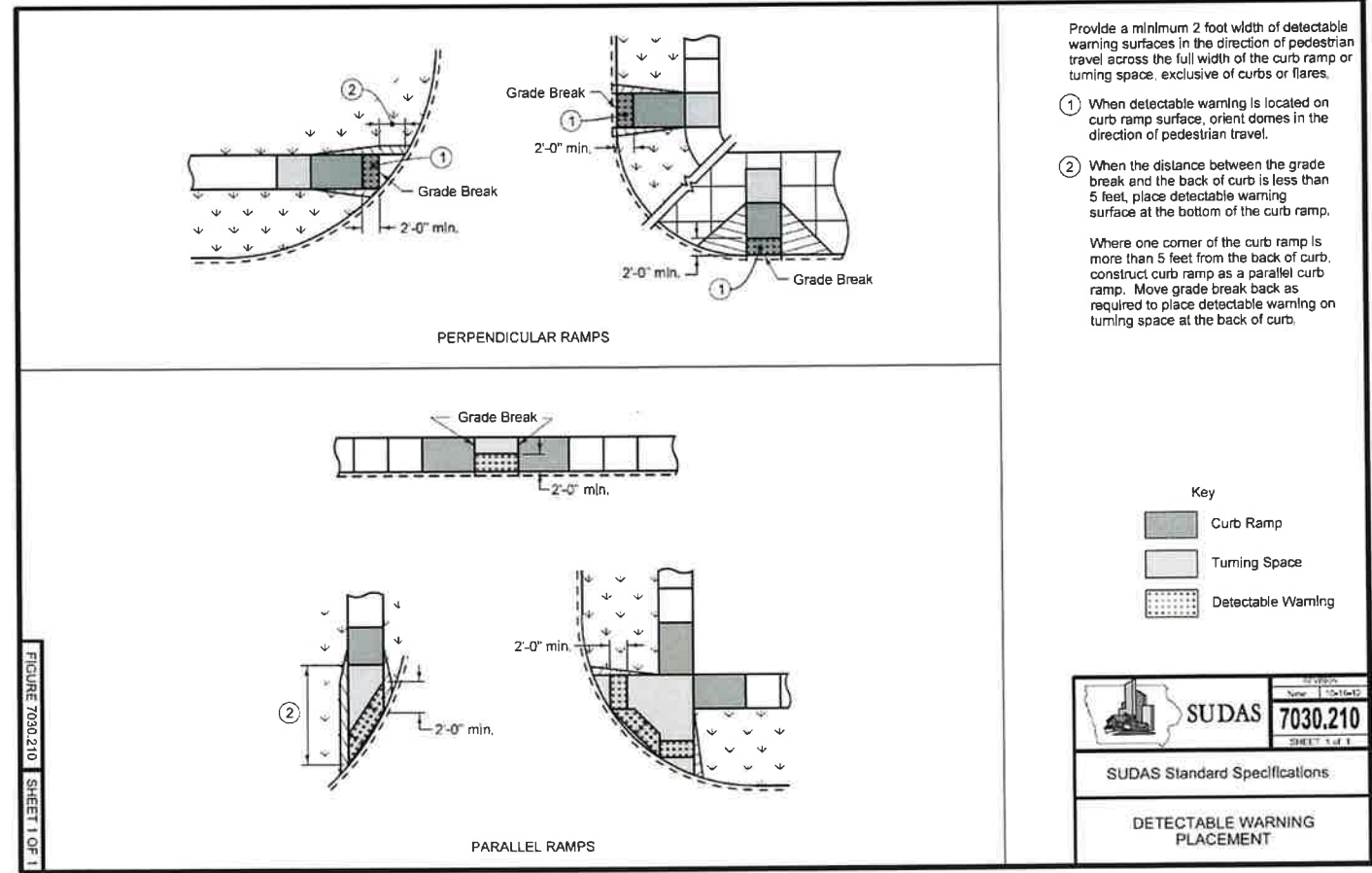
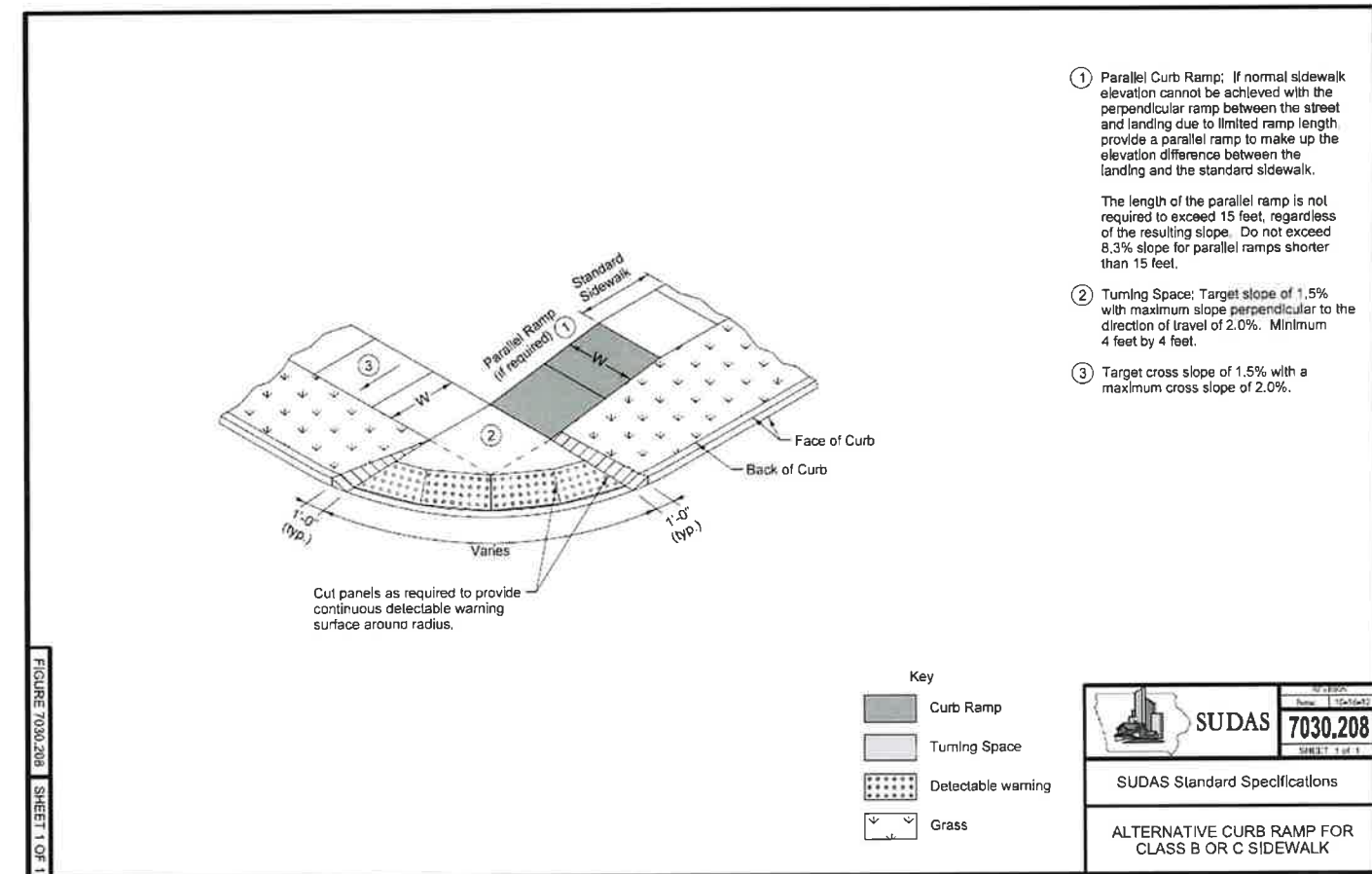
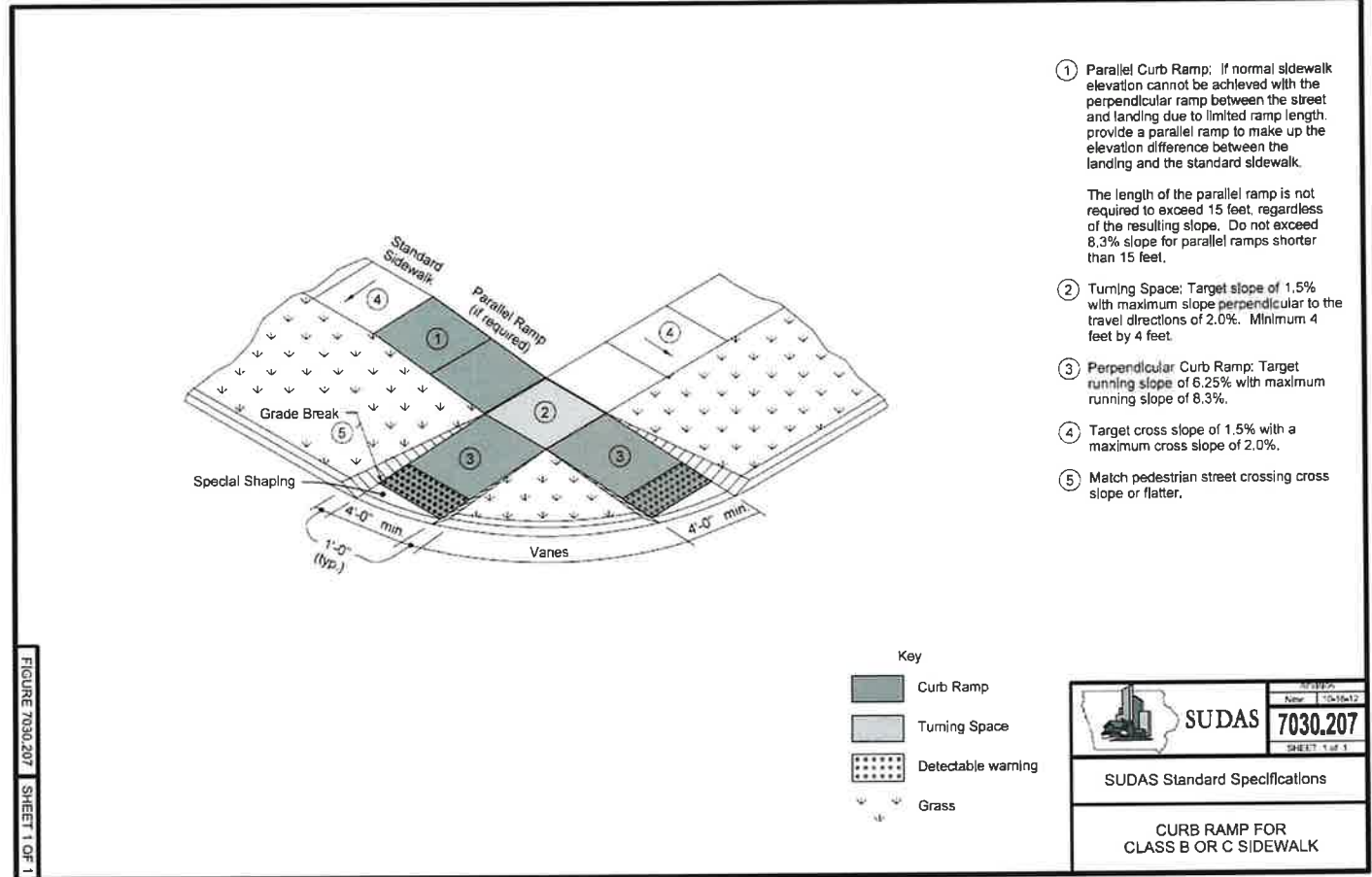
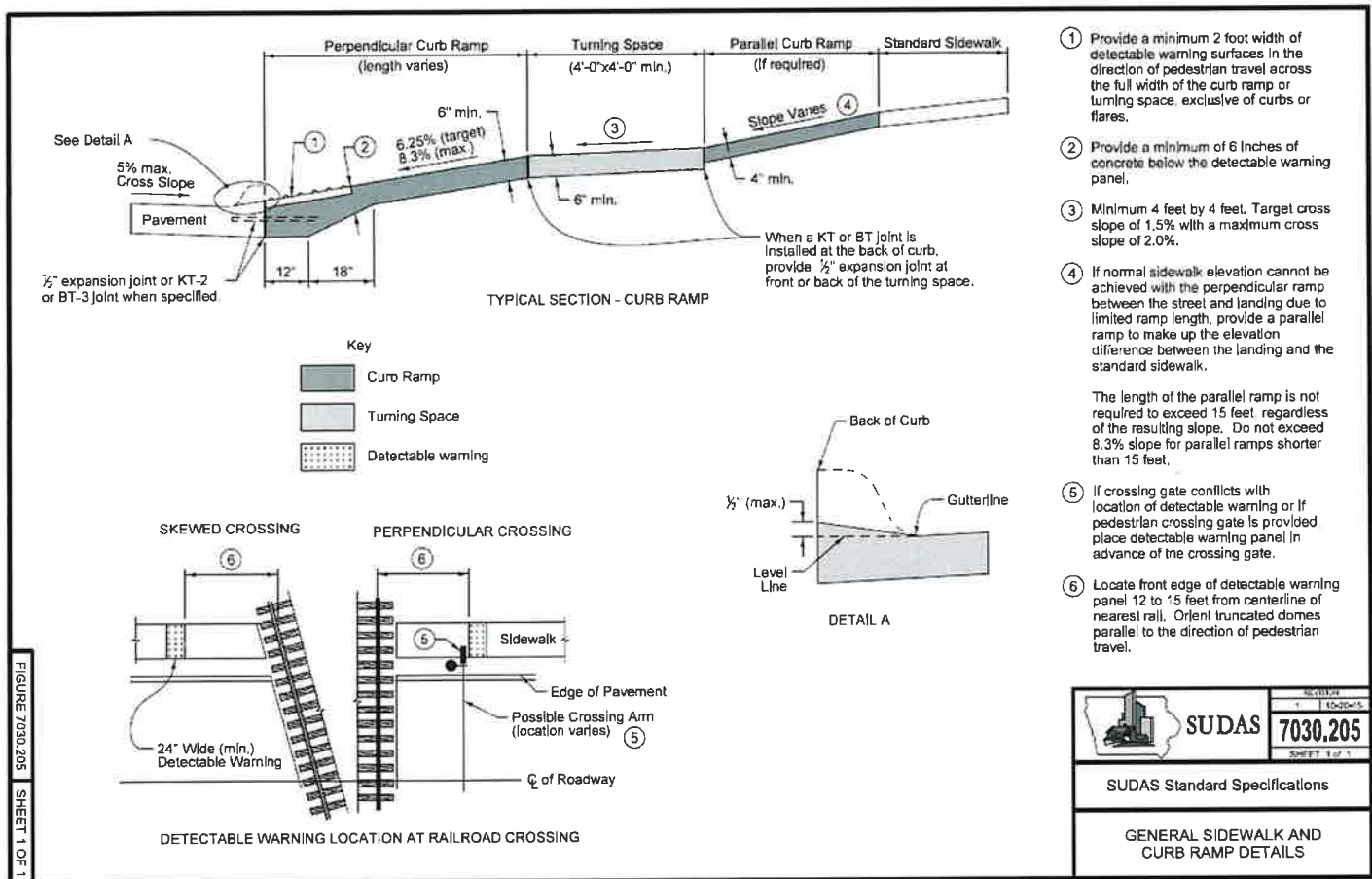
ESTIMATE REFERENCE INFORMATION					
ITEM NO.	ITEM CODE	ITEM	DESCRIPTION	PLAN QUANTITY	UNITS
1	7040-3.02-A-B	7" PCC REMOVAL	ITEM SHALL INCLUDE, BUT IS NOT LIMITED TO 7" PCC REMOVAL, SAWING, REMOVING AND DISPOSING OF EXISTING PAVEMENT AND REINFORCING, AND RESTORE SUBGRADE AS SPECIFIED IN SUDAS 7040 3.03. SAWCUT IS CONSIDERED INCIDENTAL. JOINT SEALING ON THE PATCH PERIMETER AND WITHIN THE PATCH SHALL BE CONSIDERED INCIDENTAL.	1,426	SY
2	7040-3.02-C	8" PCC FULL DEPTH PATCH	ITEM SHALL INCLUDE, BUT IS NOT LIMITED TO THE PLACEMENT OF 8" PCC, OR 2 INCHES THICKER THAN THE REMOVED PCC MATERIAL. TIE BARS AND DOWEL BARS SHALL BE CONSIDERED INCIDENTAL TO THE PATCH. MOISTEN THE SUBGRADE. CONFORM TO SECTIONS 7010 ON BARS, FORMS AND PATCH FINISH AND JOINTS, ALL OF WHICH ARE INCIDENTAL TO THE PATCH.	1,296	SY
3	7040-3.02-C	8" PCC FULL DEPTH PATCH (C3250 chicory spice)	ITEM SHALL INCLUDE, BUT IS NOT LIMITED TO THE PLACEMENT OF 8" PCC, OR 2 INCHES THICKER THAN THE REMOVED PCC MATERIAL FOR CROSS WALK SITUATIONS. TIE BARS AND DOWEL BARS SHALL BE CONSIDERED INCIDENTAL TO THE PATCH IF DEPTH WARRANTS THIS NEED. MOISTEN THE SUBGRADE. CONFORM TO SECTIONS 7010 ON BARS, FORMS AND PATCH FINISH AND JOINTS, ALL OF WHICH ARE INCIDENTAL TO THE PATCH. COLOR FOR THIS CONCRETE SHALL BE C3250 CHICORY SPICE.	130	SY
4	7020-1.08-I	FIXTURE ADJUSTMENT	ITEM INCLUDES ADJUSTING EXISTING MAHOLE CASTINGS TO GRADE AND MANHOLE BOXOUTS AS DEPICTED IN SUDAS FIGURE 7010.103 FOR PCC BOXOUTS. IF REPLACEMENT IS DEEMED NECESSARY, NEW CASTINGS SHALL BE SUPPLIED BY THE CITY. REFER TO PLANS FOR LOCATIONS OF ADJUSTMENTS. ADDITIONAL ADJUSTMENTS MAY BE AUTHORIZED BY THE ENGINEER.	8	EA
5	7030-1.08-A 7030-1.08-E	30" CURB AND GUTTER, REMOVE AND REPLACE	THIS ITEM SHALL INCLUDE, BUT IS NOT LIMITED TO, THE REMOVAL AND REPLACEMENT OF A 30 INCH CURB SECTION, SIX INCH CURB HEIGHT. CONCRETE SHALL BE CLASS-C MIX. HAND FINISHING METHODS WILL BE ALLOWED FOR ALL SECTIONS. CONSTRUCTION JOINTS SHALL BE PLACED EVERY 15 FEET OR MATCH EXISTING JOINTING. ANY TRAVELWAYS DISTURBED BY THE PLACEMENT OF CURB AND GUTTER WILL BE INCIDENTAL AND REQUIRE REPLACEMENT TO EXISTING DEPTH. ITEM SHALL ALSO INCLUDE BASE MATERIAL NEEDED FOR STABILIZATION AND THE PLACEMENT OF THE NEW CURB AND GUTTER.	0	LF
6	7030-1.08-A 7030-1.08-E	6" PCC SIDEWALK/ DRIVE, REMOVE AND REPLACE	THIS ITEM SHALL INCLUDE, BUT IS NOT LIMITED TO, THE NECESSARY MATERIALS TO TO COMPLETE THE SIDEWALK / DRIVEWAY. THIS ITEM ALSO INCLUDES THE REMOVAL OF THE EXISTING SIDEWALK / DRIVEWAY. CONCRETE SHALL BE CLASS-C MIX. ITEM INCLUDES ALL SIDEWALKS TO THE DEPTH SPECIFIED IN THE PLANS OR SPECIFICATIONS. CONTRACTOR SHALL ENSURE PROPER GRADES AND ACCESSIBILITY COMPLIANCE WITH THE ENGINEER PRIOR TO THE PLACEMENT OF THE CONCRETE. ITEM SHALL ALSO INCLUDE BACKFILL MATERIAL AND SEEDING OF ANY DISTURBED AREA AS A RESULT FROM THE PLACEMENT OF THE NEW SIDEWALK / DRIVEWAY.	1,027	SF
7	7030-1.08-A 7030-1.08-E	6" PCC SIDEWALK (C125 sumbrero buff), REMOVE/REPLACE	THIS ITEM SHALL INCLUDE, BUT IS NOT LIMITED TO, THE NECESSARY MATERIALS TO TO COMPLETE THE SIDEWALK. THIS ITEM ALSO INCLUDES THE REMOVAL OF THE EXISTING SIDEWALK. CONCRETE SHALL BE CLASS-C MIX, WITH COLOR OF C125 SUMBRERO BUFF. ITEM INCLUDES ALL SIDEWALKS TO THE DEPTH SPECIFIED IN THE PLANS OR SPECIFICATIONS. CONTRACTOR SHALL ENSURE PROPER GRADES AND ACCESSIBILITY COMPLIANCE WITH THE ENGINEER PRIOR TO THE PLACEMENT OF THE CONCRETE. ITEM SHALL ALSO INCLUDE BACKFILL MATERIAL AND SEEDING OF ANY DISTURBED AREA AS A RESULT FROM THE PLACEMENT OF THE NEW SIDEWALK / DRIVEWAY.	726	SF
8	9010-1.08-B 9010-2.02-A	SEEDING AND SEED MIXTURE	SEEDING, FERTILIZING, AND MULCHING FOR HYDRAULIC SEEDING: ITEM INCLUDES, BUT IS NOT LIMITED TO, REMOVAL OF ROCK AND OTHER DEBRIS FROM THE AREA; REPAIRING RILLS AND WASHES; PREPARING THE SEEDBED; FURNISHING AND PLACING SEED, INCLUDING ANY TREATMENT REQUIRED; FURNISHING AND PLACING FERTILIZER AND MULCH; AND FURNISHING WATER AND OTHER CARE DURING THE CARE PERIOD, WITH A TYPE 1(PERMANENT LAWN MIXTURE) AND SOWN DURING THE SUDAS SPECIFIED DATES.	862	SF
9	7030-1.08-A 7030-1.08-E	DETECTABLE WARNING DEVICE - STEEL CONSTRUCTION	ITEM INCLUDES FURNISHING AND INSTALLING DETECTABLE WARNING DEVICES AT INTERSECTION RAMPS. CONTRACTOR SHALL ENSURE PROPER PLACEMENT OF PANELS WITH THE ENGINEER PRIOR TO PLACING CONCRETE. DETECTABLE WARNING DEVICE MATERIAL AND COLOR SHALL FOLLOW THE STANDARDS OF THE CITY OF FORT DODGE.	143	SF
10		TRAFFIC CONTROL	TRAFFIC CONTROL DEVICES SHALL MEET THE REQUIREMENTS OF AND BE PLACED ACCORDING TO THE CURRENT EDITION OF MUTCD. CONTRACTOR SHALL SUBMIT TRAFFIC CONTROL PLANS TO THE CITY FOR APPROVAL PRIOR TO SET UP. CONTRACTOR IS REQUIRED TO GIVE 48 HOURS NOTICE BEFORE ANY CLOSURES. CONTRACTOR IS RESPONSIBLE FOR NOTIFYING THE BORDERING PUBLIC IF ACCESS WILL BE DISRUPTED.	1	LS
11		CONTINGENCY	CONTINGENCY FOR UNFORSSSEN CIRCUMSTANCES DUE TO SUBGRADE AND UTILITY ISSUES THAT ARE NOT EVIDENT FROM THE ORIGINAL DESIGN AND DEVELOPMENT PERSPECTIVE OF THE PROJECT.	1	LS

- NOTES:
- 1) Curb and gutter shall be considered incidental to integral pours of patches. Only where just curb and gutter sections are separate that the 30 inch remove and replace quantity shall be used.
  - 2) Traffic control shall be determined by communication between Contractor and Engineer, for the safety of the construction team, and the general traveling and pedestrian public.
  - 3) Fixtures, such as cast iron manholes and intakes shall be replaced, as needed and determined by the Engineer on the project, supplied by the city.
  - 4) Joint sealing shall be considered incidental to the placement of concrete and must be completed by removal of foreign material from the joints and before the opening to traffic.
  - 5) The contractor shall coordinate work on S 23rd Street with Nestle and Arnold Motor Supply, requiring, that at least one lane shall be maintained open at all times.

Designed	Drawn	Checked	Austin Morrow	PE
<div> <div>2026 PCC PATCH PROJECT</div> <div> City of Fort Dodge Engineering Department FORT DODGE, IA 819 1ST AVE S </div> </div>				
<div> <div>Approved</div> <div>Title</div> </div>				
<div> <div>Estimated Quantities and Reference Information</div> </div>				
GENERAL NOTES				
<div> <div>Date:</div> <div>1-1-2026</div> </div>				
<div> <div>Sheet</div> <div>B.1</div> </div>				







COLORED PAVEMENT DETAILS

SEE LINE ITEMS 3 AND 7 FOR COLOR SELECTIONS

2.1 MATERIALS

- A. INTEGRAL COLOR CONCRETE: ADMIXTURES TO BE FACTORY PROPORTIONED, MIXED, AND PACKAGED, READY-TO-USE INTEGRAL COLOR CONCRETE.
- B. CURING COMPOUND SHALL COMPLY WITH ASTM C309 AND BE OF SAME MANUFACTURER AS COLORED ADMIXTURE, FOR USE WITH INTEGRALLY COLORED CONCRETE, OR APPROVED EQUAL.
- C. SUBSTITUTIONS: THE USE OF PRODUCTS OTHER THAN THOSE SPECIFIED WILL BE CONSIDERED PROVIDING THAT CONTRACTOR REQUESTS ITS USE IN WRITING WITHIN 10-DAYS PRIOR TO BID DATE. THIS REQUEST SHALL BE ACCOMPANIED BY THE FOLLOWING:

1. A CERTIFICATE OF COMPLIANCE FROM MATERIAL MANUFACTURER STATING THAT PROPOSED PRODUCTS MEET OR EXCEED REQUIREMENTS OF THIS SECTION.

2. DOCUMENTED PROOF THAT PROPOSED MATERIALS HAVE A 10-YEAR PROVEN RECORD OF PERFORMANCE CONFIRMED BY AT LEAST 5 LOCAL PROJECTS THAT ENGINEER CAN EXAMINE.

2.2 COLORS AND PATTERNS

- A. COLORS: SEE PLAN.
- B. FINISH: LIGHT BROOM FINISH.

2.3 CONCRETE MIX DESIGN

- A. USE CLASS A OR C CONCRETE WITH MATERIALS, COMPLYING WITH SUDAS SECTION 2010. USE COARSE AGGREGATE OF CLASS 2 DURABILITY OR BETTER.
- B. INTEGRAL COLOR ADMIXTURES FOR CONCRETE CAN BE INTRODUCED AT ANY POINT IN THE CONCRETE MIXING PROCESS AS LONG AS THE OTHER CONDITIONS OF THE PLANS AND SPECIFICATIONS ARE MET. ENOUGH MIXING AND TIME MUST BE GIVEN FOR THE COLOR TO REACH AN UNCHANGING UNIFORM APPEARANCE.
- C. COLOR SELECTION WILL DETERMINE THE RATIO OF BASE COLORS NEEDED, AND COLOR SATURATION, AND INTENSITY WILL DETERMINE THE AMOUNT OF LIQUID OR GRANULES REQUIRED. MIX IN ACCORDANCE WITH MANUFACTURERS REQUIREMENTS, RECOMMENDATIONS AND SPECIFICATIONS FOR COLORS SPECIFIED.
- D. NO HIGH SALT AGGREGATES THAT CAN CAUSE EFFLORESCENCE AND MAKE COLOR IRREGULAR.
- E. DO NOT ADD CALCIUM CHLORIDE TO MIX AS IT CAUSES MOTTLING AND SURFACE DISCOLORATION.

- F. SUPPLEMENTAL ADMIXTURES SHALL NOT BE USED UNLESS APPROVED BY MANUFACTURER.
- G. DO NOT ADD WATER TO THE MIX DESIGN ONCE ESTABLISHED OR IN THE FIELD. DO NOT ADD WATER TO LOOSEN PARTIALLY CURED LOADS.

COLORED CONCRETE

COLOR CONCRETE ADMIXTURE  
SIKACOLOR 120G COLOR CHART:

TYPE 1- C125 SOMBRERO BUFF  
TYPE 2- C37 SUNBAKED CLAY  
TYPE 3- C3250 CHICORY SPICE

EQUAL SUBSTITUTION COLOR CONCRETE ADMIXTURE  
FEDERAL STANDARD COLOR CHART:  
TYPE 1- FEDERAL COLOR 20450  
TYPE 2- FEDERAL COLOR 12160  
TYPE 3- FEDERAL COLOR 20206

COLOR SYSTEM AS PER THE FOLLOWING  
MANUFACTURERS:

ACCEPTABLE VENDORS:

SIKA CORPORATION.  
201 POLITO AVE. LYNDHURST, NEW JERSEY 07071  
PHONE: (201) 933-8800  
FAX: (201) 804-1076  
WWW.USA.SIKA.COM

SOLOMON COLORS  
4050 COLOR PLANT RD. SPRINGFIELD, IL 62702  
PHONE: (800) 624-0261  
WWW.SOLOMONCOLORS.COM

DAVIS COLORS  
3700 EAST OLYMPIC BLVD. LOS ANGELES, CA 90023  
PHONE: (323) 265-8323  
EMAIL: INFO@DAVISCOLORS.COM

INSTALL IN ACCORDANCE WITH MANUFACTURER  
RECOMMENDATIONS, SPECIFICATIONS, AND  
REQUIREMENTS OR APPROVED EQUAL.

Designed

Drawn

Checked AUSTIN MORROW, PE

2026 PCC PATCH PROJECT

City of Fort Dodge Engineering Department  
FORT DODGE, IA  
819 1ST AVE S

Title

Detail Sheet

Date

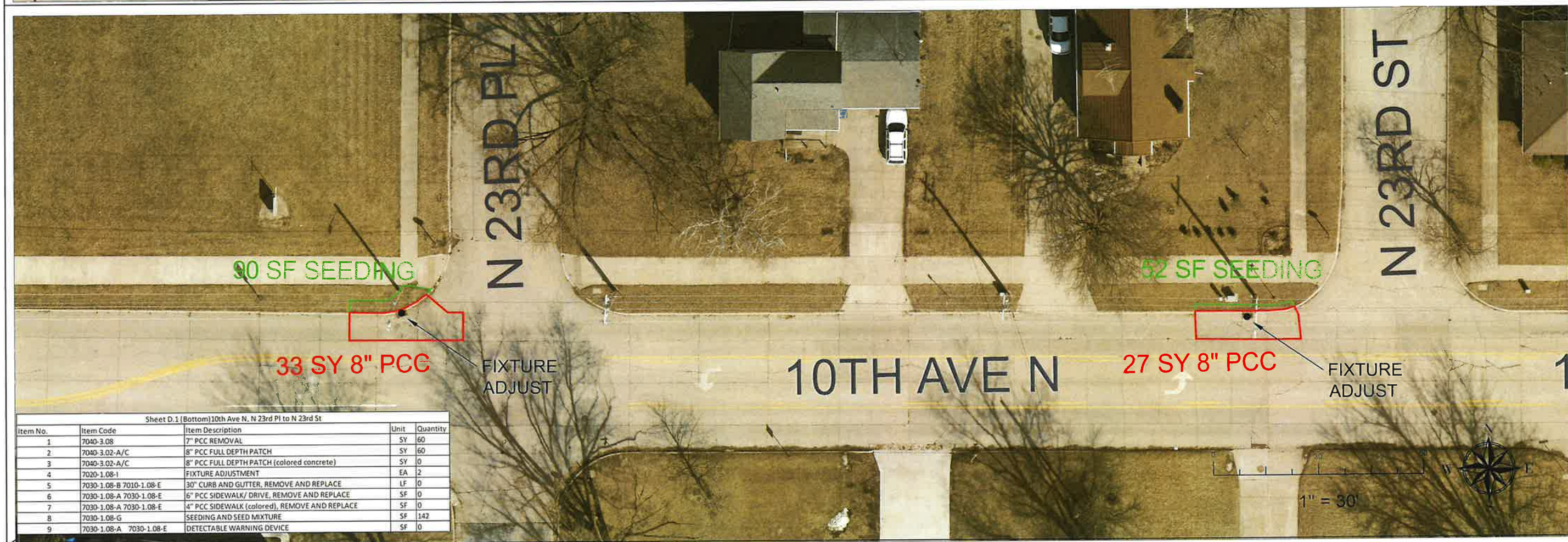
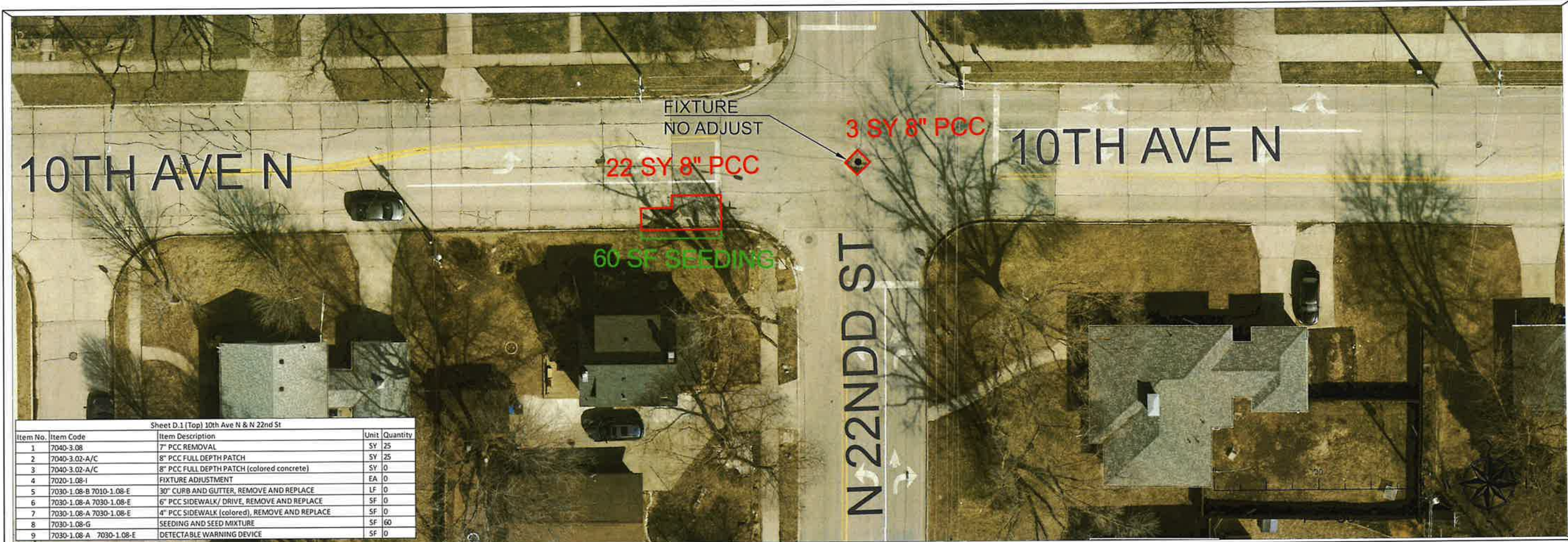
Date:

1-1-2026

Sheet C.3

GENERAL NOTES





Designed

Drawn

Checked Austin Morrow, PE

2026 PCC PATCH PROJECT

City of Fort Dodge Engineering Department  
FORT DODGE, IA  
819 1ST AVE S

Approved

Paving Plan Sheet

Title

Date

GENERAL NOTES

Date:  
1-1-2026

Sheet D.1







