

# Trail & Bikeway Facility Types



# Goals



**GOAL 01**  
Provide a complete bicycle and pedestrian system with connections to various destinations.

**System Objectives**

- Ensure that the correct facility type is used on each street that is part of the on-street bicycling network
- Prioritize improvements to make important connections, to take advantage of funding or timing associated with related projects, and to improve safety
- Ensure that policies, ordinances, and standards support biking and walking

**GOAL 02**  
Increase biking and walking trips for health, recreation, and transportation.

**Trip Objectives**

- Encourage biking and walking through fun events, celebrations, and incentives

**GOAL 03**  
Ensure safety for all when biking and walking.

**Safety Objectives**

- Increase individuals' knowledge of trail etiquette, bicycle maintenance, and bicycle safety
- Maintain trail and bicycle routes in good condition
- Ensure equitable laws and equitable enforcement

**GOAL 04**  
Develop a marketing plan to promote the Prairie Rivers Trail System.

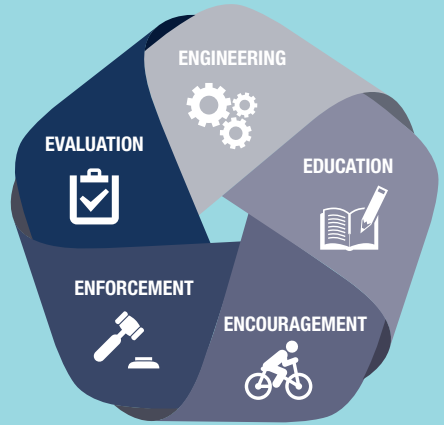
**Marketing Objectives**

- Increase local and regional knowledge and awareness of the Prairie Rivers Trail System facilities and brand
- Develop partnerships and utilize available resources to promote trail use
- Make information easily accessible
- Increase public support for trail and bicycle facility development, education programs and use throughout the county

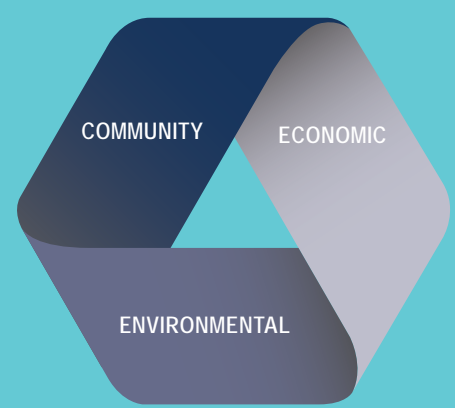
# 5 E's of Bicycling

Using the Five E's ensures a safe and enjoyable experience for all. We follow the five E's of Bicycling in order to:

- Encourage** our communities use of the Prairie Rivers Trail System
- Evaluate** the effectiveness of the network
- Educate** users and non-users on trail and bike etiquette
- Enforce** safety measures in place.
- Engineer** safe and practical routes and amenities



# Trail Benefits

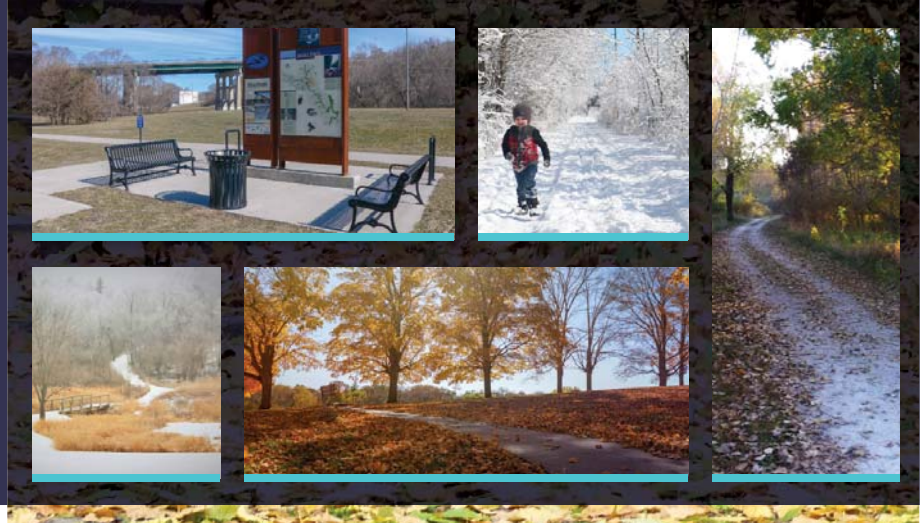


- Community**
- Facilitate healthy lifestyles
  - Reduce stress
  - Promote equitable mobility
  - Increase social interaction
  - Improve quality of life
- Economic**
- Reduce transportation costs
  - Attract tourism and related spending
  - Attract and retain businesses and residents
  - Increase property values
- Environmental**
- Promote personal connection to your city & your environment
  - Reduce greenhouse gas emissions
  - Reduce use of fossil fuels
  - Reduce traffic congestion

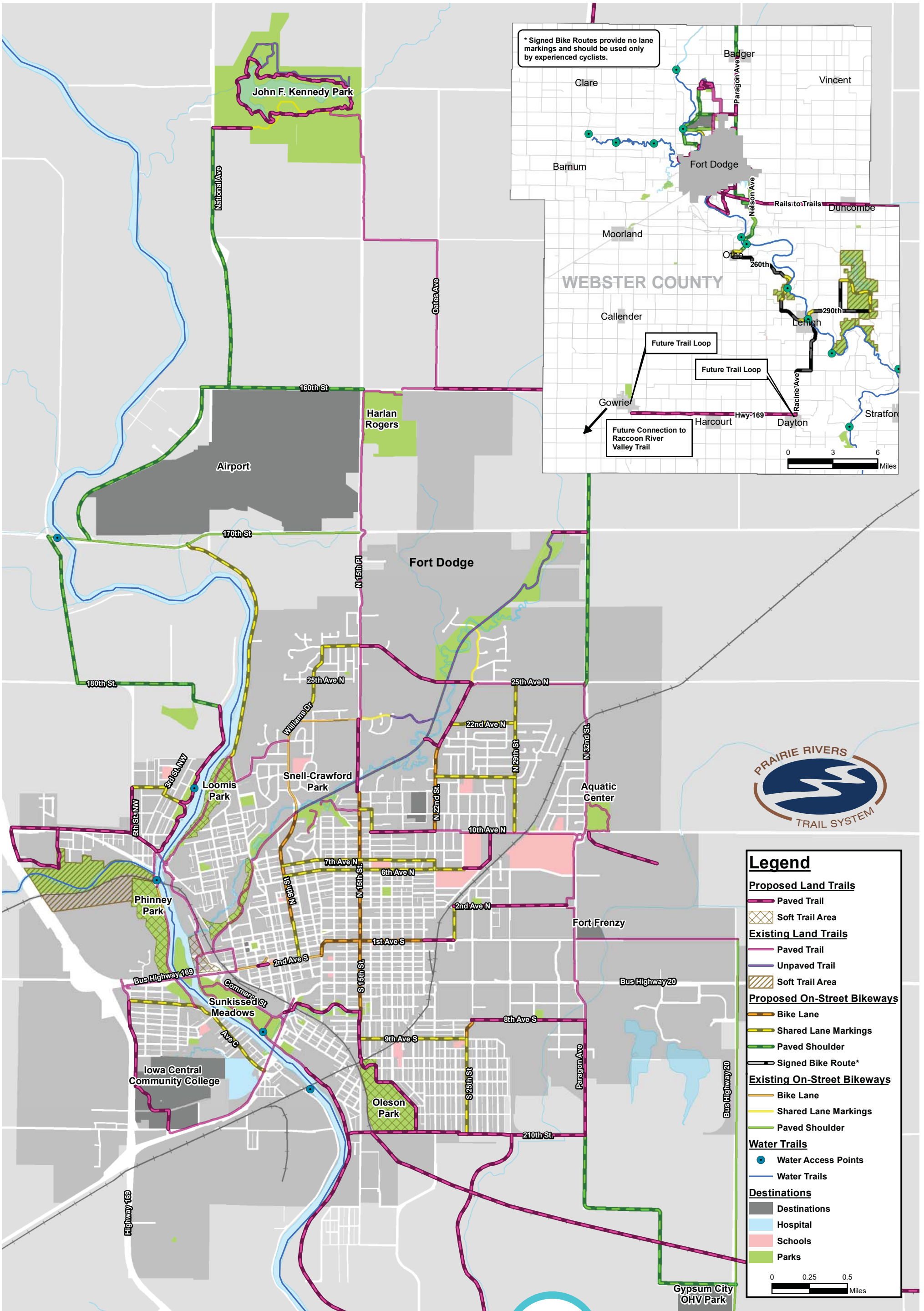
# HIKE & BIKE WC

## BICYCLE, PEDESTRIAN & TRAILS MASTER PLAN

WEBSTER COUNTY | FORT DODGE, IA



JULY 2018



# HIKE & BIKE

## BICYCLE, PEDESTRIAN & TRAILS MASTER PLAN

WEBSTER COUNTY | FORT DODGE, IA



Fort Dodge & Webster County  
Network Maps

Existing & Proposed Facilities